

REMANUFACTURING AND RECONDITIONING OIL AND GAS PROCESSING EQUIPMENT

Utilizing the same in-house engineering and design principles that ATLAS applies to new process equipment, including:

- Equipment selection, sizing and assessment
- Repair and Alteration of Pressure Vessels including engineering, design drawings and registration.
- Instrumentation and Electrical
- Pressure Piping Design and Replacement
- Structural Steel Skids and Structures
- Sandblasting, Painting and Internal Coatings
- Modifications to New Process Equipment
- All makes and sizes of Crude Emulsion Heater Treater



ATLAS Nisku Manufacturing Facility

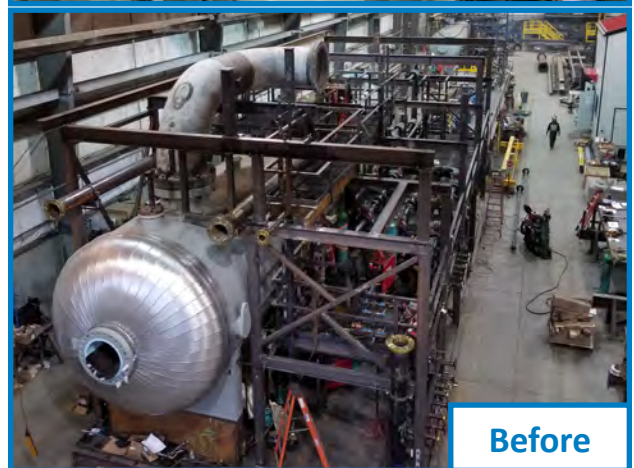
- 76,000 ft² under roof, located on 10 acres
- 16 Overhead Cranes, 32 ft under-hook
- 300 Ton weight capacity
- Direct access to Oversized Shipping Corridor, Rail Spur
- Engineering Permits to Practice, AB, BC, SK
- Certifications: ASME, "U", "UM", CWB, ABSA
- COR Certified



Before



After



Before



After